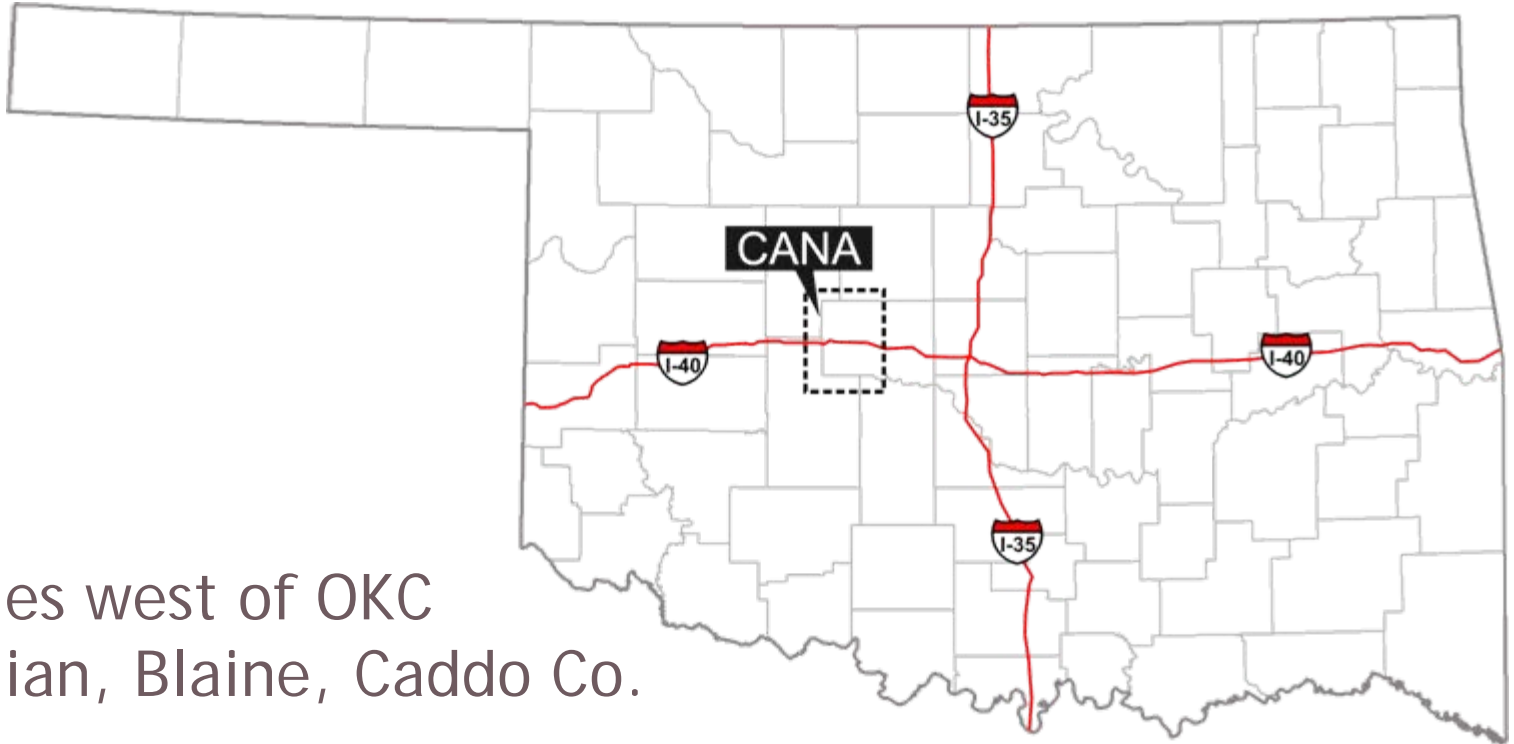


# Devon Energy

## Cana Woodford Shale

AADE Symposium  
January 20, 2010  
Mark Williamson

# Cana Field Location



- 40 miles west of OKC
- Canadian, Blaine, Caddo Co.

# History of Cana Field

- October 2006 - obtained Woodford whole core
- March 2007- recompleted an existing vertical well to prove gas production from Woodford Shale
- Tested Woodford horizontal concept with 3 wells in Q4 2007
- **Initiated field development drilling program 18 months after concept was presented**
- Expanded field with 16 Devon operated Woodford horizontal wells drilled in 2008
- Devon Energy spud 33 Woodford horizontal wells in 2009

# Cana Woodford vs. Haynesville

## •Cana

- 11500' to 14500' TVD
- 16700' to >19000' MD
- 4000' to 5000' lateral length
- 13 to 15 ppg TD mud weight
- 250°F BHST

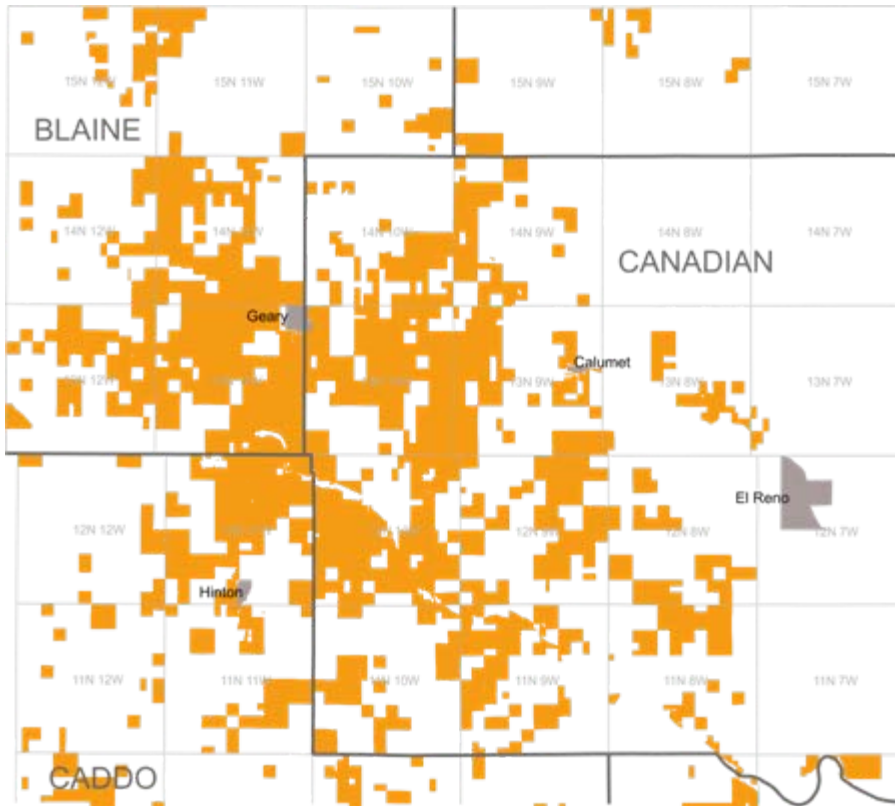
## •Haynesville

- 11000' to 12000' TVD
- 15500' to 16500' MD
- Approximately 4000' lateral length
- Approximately 17 ppg TD mud weight
- 275°F to 320°F BHST

\*Cana is the world's deepest commercial horizontal shale play

# Asset Summary

## Cana Woodford



Net risked resource: 5.9 TCFE  
Risked locations: 3,100

Net acreage: 109,000

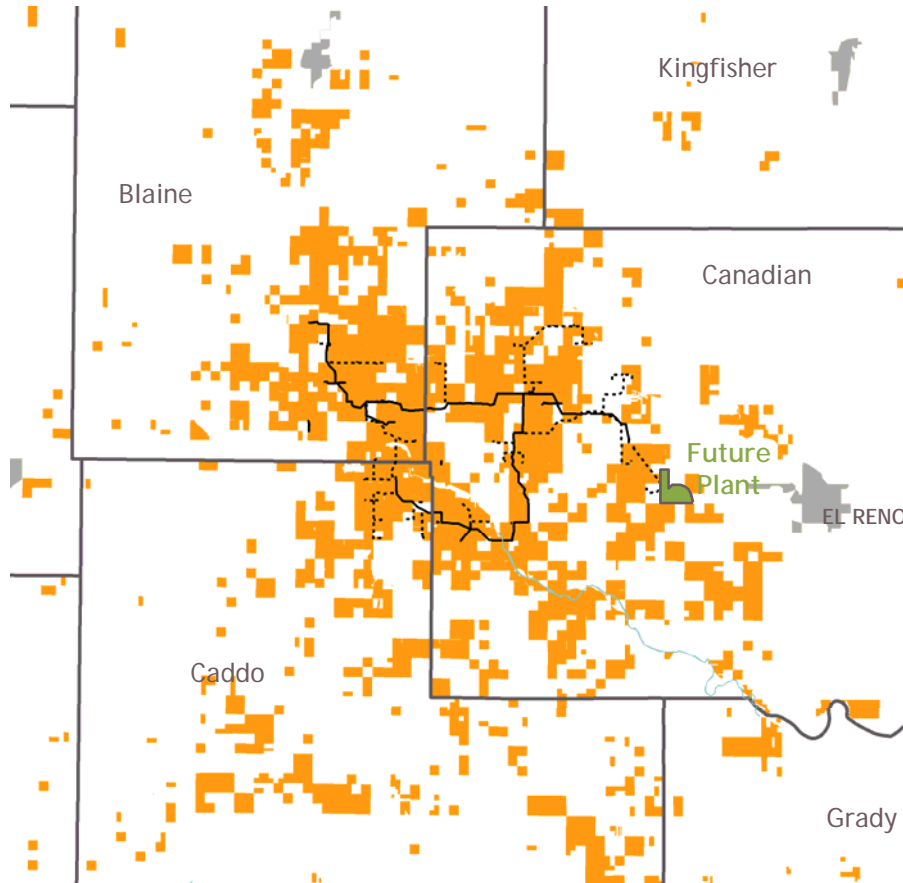
Q3 '09 net production:  $\approx$  53 MMCFED

Drilled 46 operated wells thru end of '09

2010 Plans: Drill  $\approx$  80 wells

# Strategic Midstream Presence

## Cana Woodford



- Building gas gathering system
- Constructing gas processing plant
  - 100% ownership
  - Initial phase: 200 MMCFD
  - Expandable to 600 MMCFD
  - Expected startup: early 2011

# Current Rig Fleet

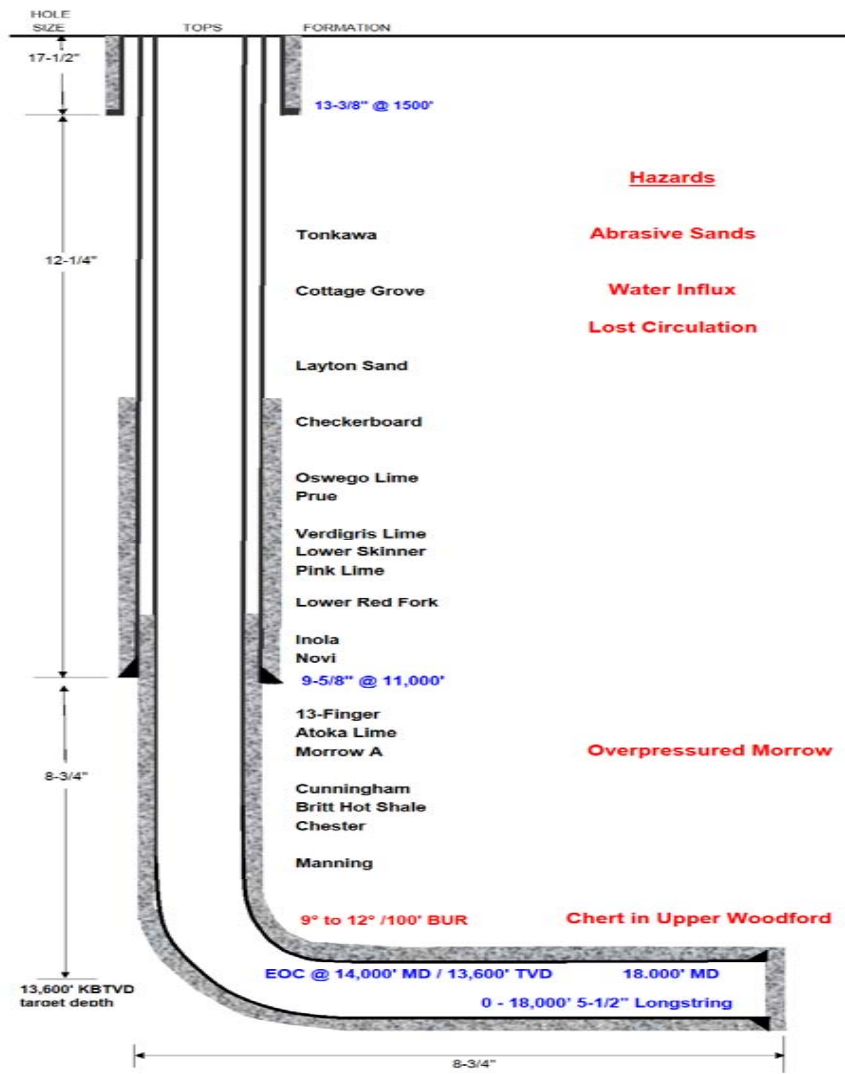
## Cana Woodford

- 7 rigs currently operating for Devon in the Cana field
- All are H&P Flex III rigs
- 6 rigs were new builds with term contracts



# Typical Wellbore

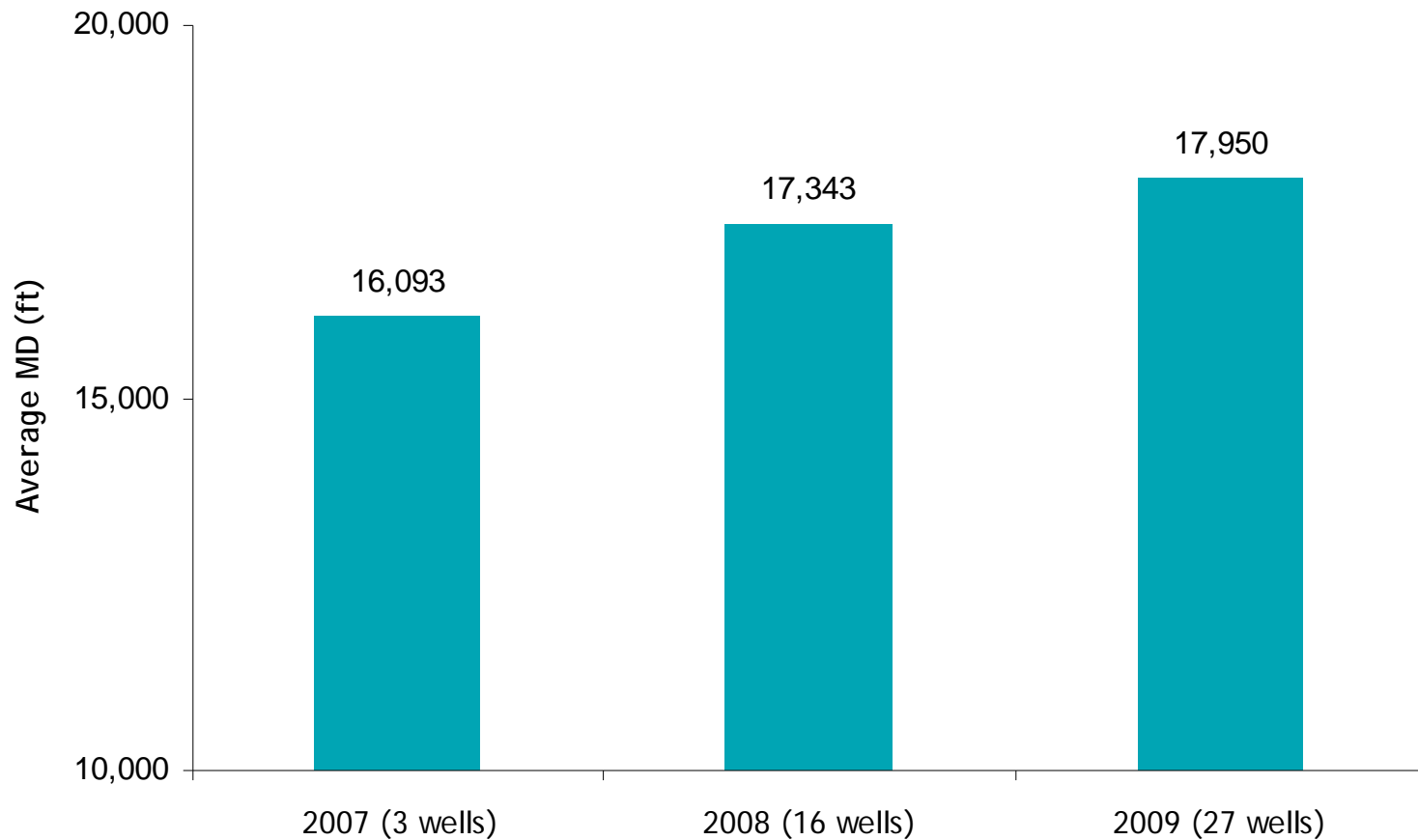
## Cana Woodford





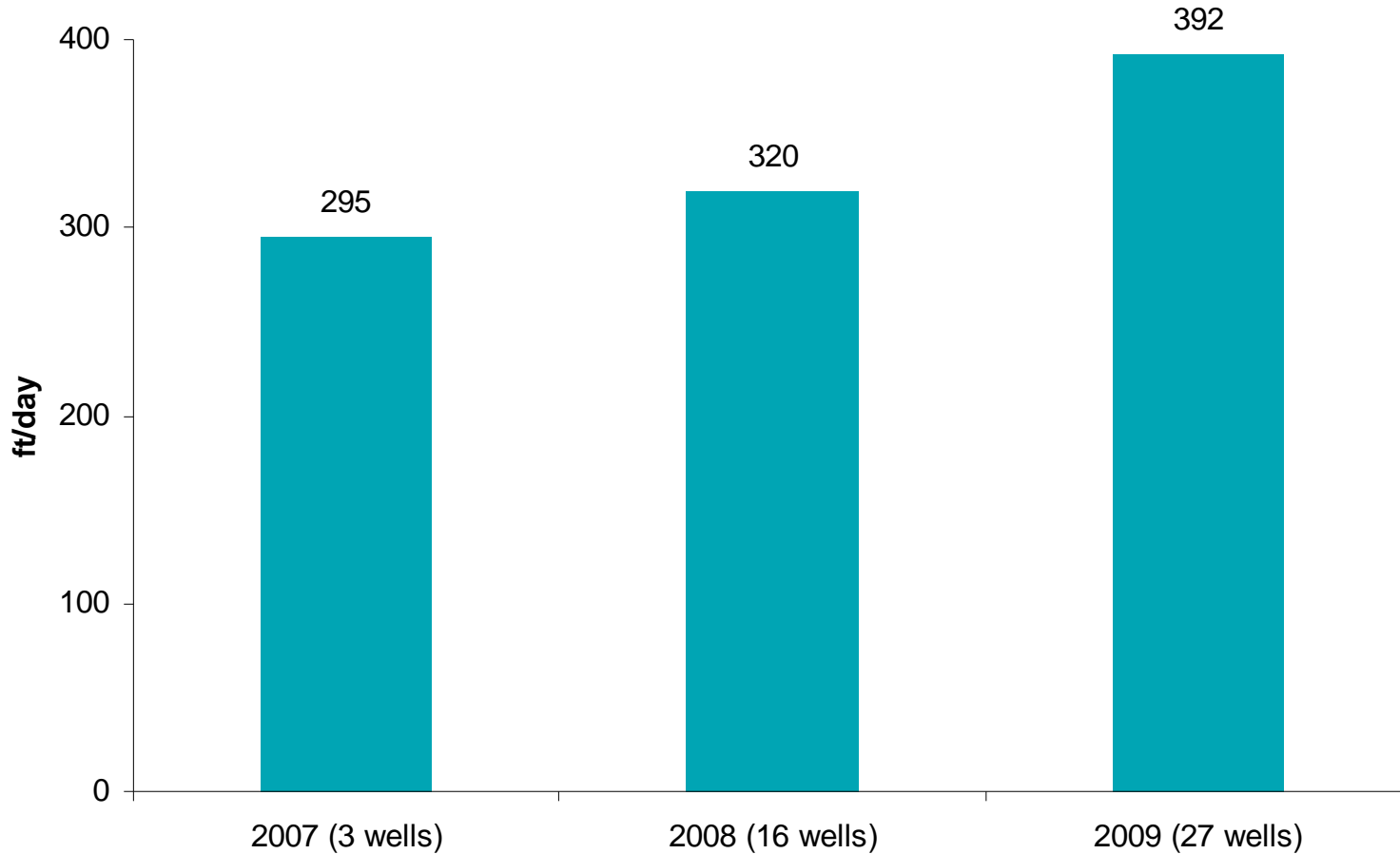
# Cana Drilling Performance

## Average Measured Depth by Year



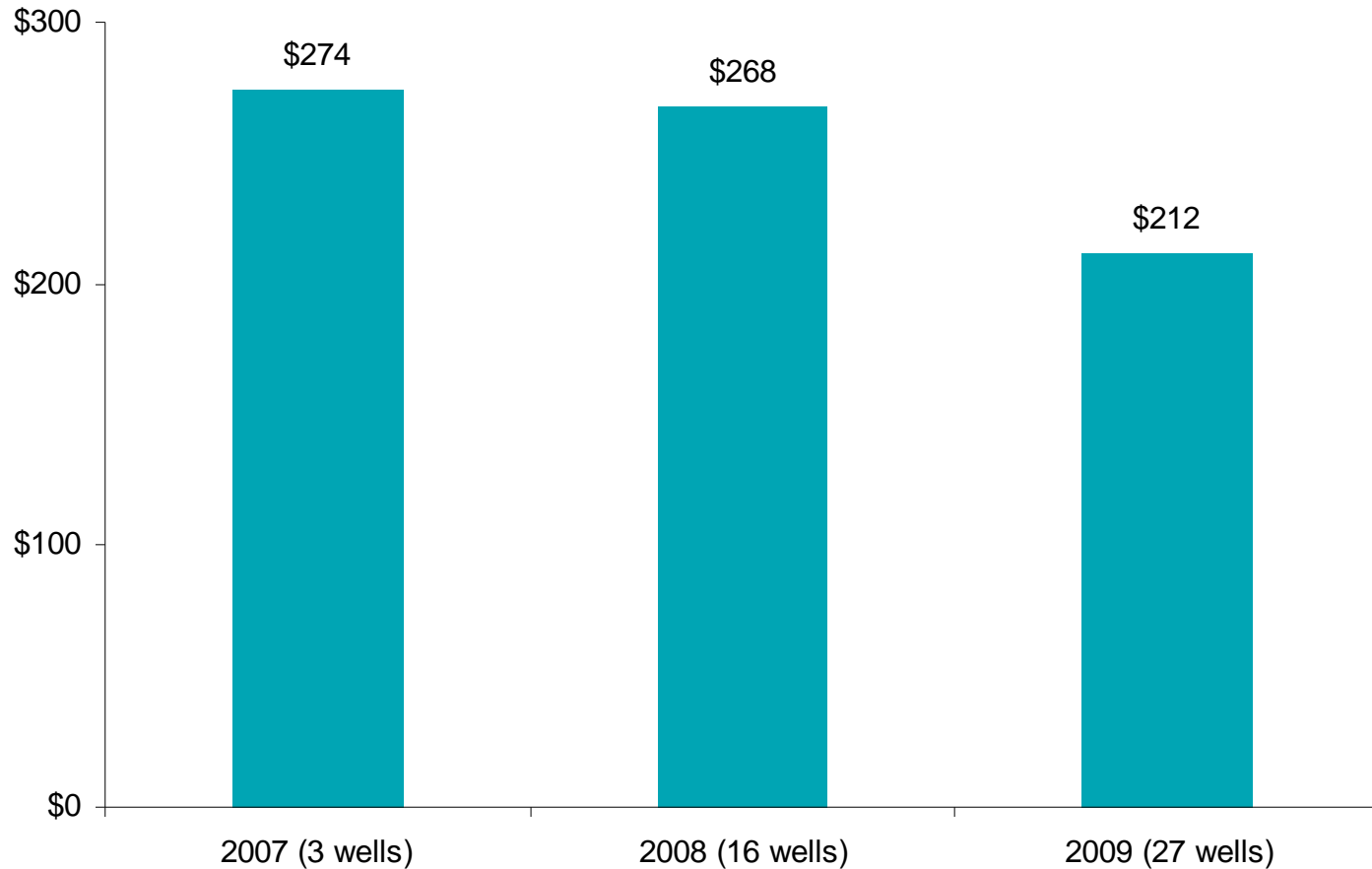
# Cana Drilling Performance

## Dry Hole Ft/Day by Year



# Cana Drilling Performance

## Dry Hole Cost/Ft Drilled by Year



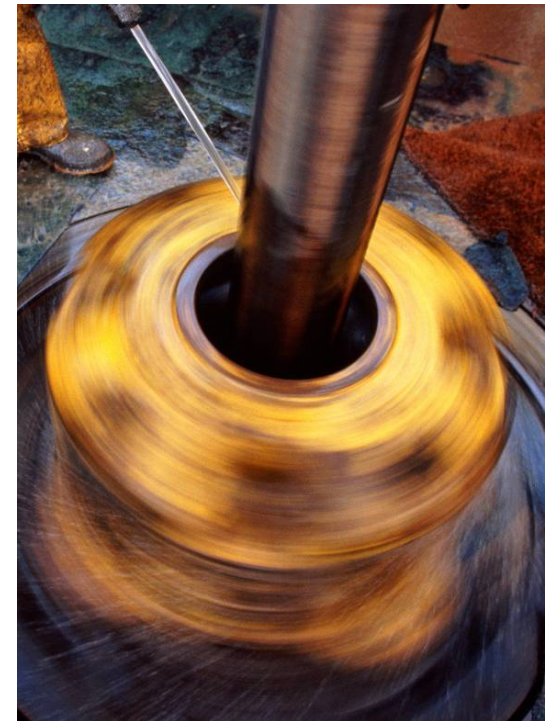
# Devon Production Summary

Current production (Q3 2009):  $\approx$  673 MBOED

Production mix (Q3 2009):  
65% gas  
35% liquids

Production profile (Q3 2009): 94% North America

Reserves / production ratio:  $\approx$  10 years



# Recent Announcement

November 16, 2009

Devon announces plan to strategically reposition company as high-growth, onshore North American exploration and production company.

# Devon Repositioning

## Expected Proceeds

Gulf Deepwater

Gulf Shelf

Azerbaijan

Brazil

China

Other International

By Year-End 2010

Estimated  
After-Tax  
Proceeds

\$4.5 - \$7.5 Billion

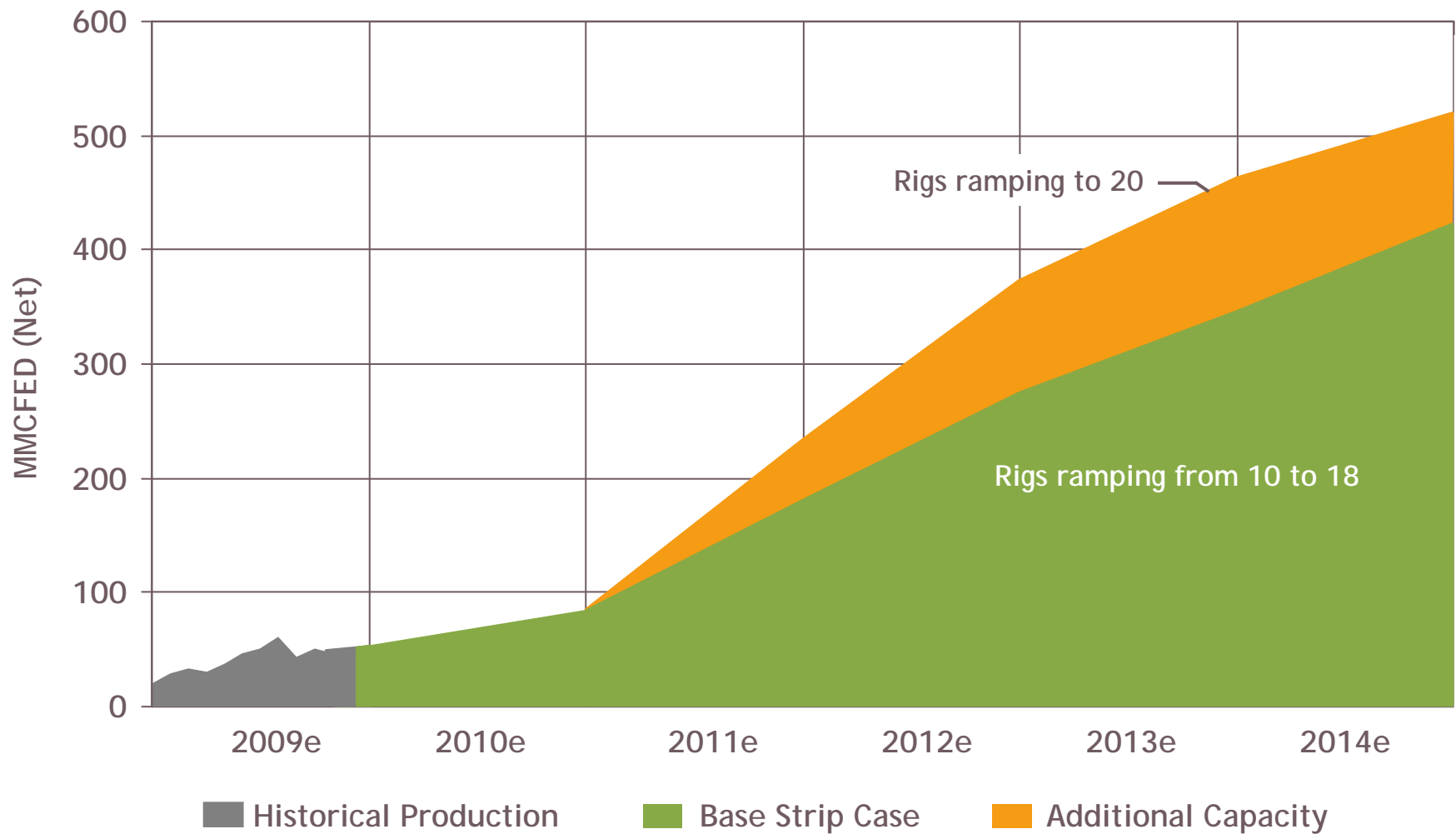
# Devon Repositioning

## Future Direction

- After tax proceeds will be allocated between:
  - Acceleration of North American onshore opportunities
  - Debt reduction



# Cana Woodford Growth Potential





Thank You.